

HAPPY HOLIDAYS! & a Happy New year

DECEMBER 20, 2018

THE BEACON HILL TIMES

T H E R E A R E N O T I M E S L I K E T H E S E T I M E S

HOLIDAY DEADLINES

Our Holiday deadline for the Wednesday, December 26th issue is **FRIDAY, DECEMBER 21st**. Please have all News and Ad Copy submitted to our offices no later than 4:00 PM on Friday the 21st.

Torit Montessori launches 'Farmers to You' market

Special to the Times

Torit Montessori is transforming its school lunch and snacks through local farm partnerships and in-house cooking, and is thrilled to announce a partnership with "Farmers to You," a year-round online farmers' market which delivers (by bicycle!) fresh, local, and organic produce, pasture-raised meats, and artisan cheese and other goodies to Torit's Cambridge Street kitchen.

Torit also sources food from Stillman Meats, Valicenti Pasta and Red's Seafood. All of these local producers appear at local farmers markets around Massachusetts, including Copley Square and the Boston Public Market.

"This wonderful partnership with local farmers and producers is the culmination of years of planning and collaboration leading to the build-out and launch of our own commercial-grade kitchen,"

said Kristen Mansharamani, executive head of school. "Cooking and serving our own hot lunches using allergy-free, organic and locally sourced foods, including supplemental groceries from Whole Foods, was a goal of mine since Torit's founding. I hope this can serve as a model for school lunch, because the right nutritional balance is inherently related to both academics and general student success."

Renee Chan, mother of both an elementary and a preschool student at Torit, enthusiastically embraced the partnership, and carefully worked out menu options with input from teachers, students, staff and our in-house chef, Kelli McKoy of First Bite Catering. As a bonus, fourth-graders put their journalism skills to work, researching the farms and interviewing

(TORIT Pg. 4)

ADVENT SCHOOL'S WINTER CONCERT



Photo by Marianne Salza

Kindergarteners singing, "Ghosts Fly" during the Advent School's Winter Concert last Friday, Dec. 14. Kids from all the grades performed for parents and school staff, delighting the crowd with all the holiday favorites. See Page 7 for more photos.

DROP SANTA A LINE



The Friends of the Myrtle Street Playground are helping Santa collect letters in its "North Pole" mailbox, which is located underneath the Little Library at the playground. Santa's mailbox will be accepting letters through Dec. 21, and if you include your address, he will even write you back.

BEACON HILL CIVIC ASSOCIATION COMMUNITY CORNER

Remember to Bring a Tote Bag!

After years of debate, Boston's plastic bag ban has arrived. On Friday, Dec. 14, Boston joined more than 87 other Massachusetts cities and towns in limiting the use of disposable plastic bags. As we try to get used to this change, we can feel good knowing that we are helping to limit the damage these thin bags do to our waterways, trash and sewage systems, and wildlife and human health.

The new rules prevent the use of the thin, plastic bags with carry handles, such as in a grocery store or takeout order. Instead, retailers must offer paper bags (with at least 40-percent recycled paper), compostable bags, or reusable thicker plastic bags, and they must charge at least 5 cents for each.

The rules are being phased in with the largest retailers beginning Dec. 14, mid-size stores beginning April 1, 2019, and the smallest businesses coming last on July 1, 2019. (There are a few exemptions that you can learn more about at <https://www.boston.gov/departments/environment/reducing-plastic-bags-city-boston>.)

The 'bag ban' does not include plastic newspaper bags, plastic wrapping on food, dry cleaning bags or trash bags. It also does not include dog waste disposal bags, although dog owners can be friends to the environment by choosing to buy biodegradable waste bags (readily available at Amazon and other pet supply stores).

We are encouraged to see Boston trying to limit single use plastics and hope this effort leads to healthier outcomes in our neighborhood and our city.

Please stop by the BHCA office at 74 Joy St. to pick up a reusable bag!

Upcoming BHCA Meetings

No meetings.

Please Note

The BHCA office will be closed from Monday, Dec. 24, through Tuesday, Jan. 1. Our clothing and food collections are ongoing through January 31st – but please bring your donations by Friday Dec. 21 or after Jan. 1. We appreciate your involvement in this important community service.

Other upcoming BHCA Events

Health Care in the Streets: Lessons from Three Decades of Caring for Boston's Rough Sleepers with Dr. Jim O'Connell – Thursday, Jan. 17, 7-8:30 p.m., 74 Joy St.

47th Annual Beacon Hill Gala – Saturday, Feb. 9, at the Omni Parker House

Visit the Beacon Hill Civic Association website www.bhcivic.org or call the office (617-227-1922) for more information on any of these events.

EDITORIAL

ENJOY THE HOLIDAY SEASON

This is a wonderful time of the year, to paraphrase the song, with holiday music playing in the malls and on our car radios, resurrecting our earliest childhood memories -- even for the younger set -- of Christmases-past.

We choose just the right tree, decorate it carefully with our family-heirloom ornaments, and when we first turn on the lights, it brings a smile even to the oldest among us.

Despite the hectic rushing to and fro, everybody it seems, is in a good mood. We endure the traffic, the long lines in stores, and more, because we know that what we are doing will bring joy and happiness to others.

For those of us with young children, we get to see Christmas through their eyes, giving us a second-chance to experience the wonder and joy that we felt when we were their age.

Although all of us celebrate Christmas in our own way, the common thread is one of peace, joy, and happiness, regardless of religious or secular beliefs. Whether it be Christmas, Hanukkah, Kwanzaa, or a Seinfeldian Festivus, the spirit of the season imbues us with a sense of togetherness that (unfortunately) only comes once a year.

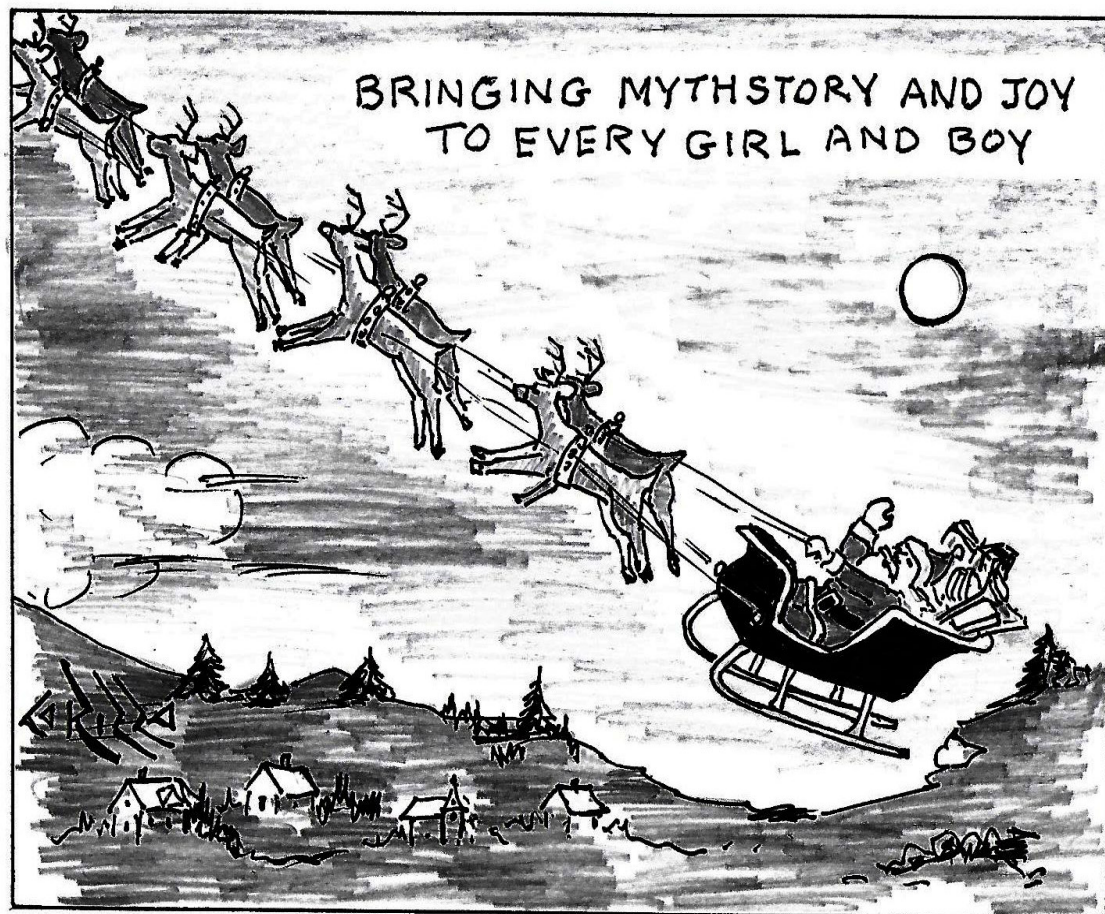
We wish all of our readers a happy holiday season.

ENJOY THE HOLIDAYS -- SAFELY

Christmas this year is part of what for many people will be a four-day weekend, which means that for many of us, we will be indulging in the "Christmas spirit" early and often.

By no means do we wish to cast negative thoughts, but we would be remiss if we did not remind all of our readers to enjoy the holiday weekend safely. This especially means that we should be careful not to drink and drive, not only as to ourselves, but also as to those whom we know and love.

If someone appears to be under the influence, it is incumbent upon all of us not to let that person get behind the wheel of a car. Call an Uber if you have to -- if it is within our ability to prevent a tragedy, we must be sure to do so.



MERRY CHRISTMAS

GUEST OP-ED

Reducing disposable bags in Boston

By Martin J. Walsh

The City of Boston's new plastic bag ordinance is a big step forward in our work to cut carbon emissions, reduce pollution, and create a cleaner, greener city. When the new ordinance goes into effect on Dec. 14, 2018, stores in Boston will no longer provide plastic checkout bags to customers. Ahead of the change, we're making sure everyone has the information they need. We are answering questions and distributing reusable bags and signage throughout neighborhoods and main streets. And we're asking you to help by reminding neighbors and friends to bring a reusable bag when shopping in the city.

Here's why we're encouraging everyone to switch to reusable bags: It's an opportunity to be good environmental stewards and responsible neighbors. Single-use plastic bags have a big impact on the environment. Plastic bags often end up in our streets and gutters, vacant lots, and trees. They're harmful to our marine life and pollute our waterways. You can use reusable bags time and time again without tossing

them in the trash, which helps to reduce waste and carbon pollution. As a city committed to being carbon free and moving toward zero waste, this is a big step in the right direction.

So, how will you carry your groceries home? Moving forward, stores will provide recyclable paper, compostable, or reusable bags to customers, starting at 5 cents per bag. This charge goes back to the businesses to help them cover the cost of new sustainable checkout bags. As a customer, you can avoid the charge by remembering to bring a reusable bag whenever you shop. Businesses will be able to use their existing inventory of plastic bags by applying for an exemption to the City's Inspectional Services Department.

Switching to reusable bags is an important milestone, but it's just one of the ways that you can help reduce waste. You can also use the City's trash app. It allows you to check which materials are recyclable, and reminds you of your collection schedule, which means you may never miss your recycling or yard waste pick up day again. You can learn more about upcoming hazardous waste

drop-off days and composting in the city at boston.gov/trash-and-recycling-guide.

As a sustainable city, we're committed to reducing our waste and the carbon pollution that causes climate change. We're exploring ways to support waste reduction as well as increase opportunities for repair, reuse, recycling, composting and remanufacturing. Switching to reusable bags gets us closer to that goal. I'm proud of our progress and I know there's much more work to be done -- but first, let's all remember to bring our reusable bags this holiday season and remind our neighbors to do the same.

Our Office of Neighborhood Services will be distributing reusable bags to residents, and bags will also be available for pick up at Boston Centers for Youth & Families (BCYF) locations. Businesses and residents can learn more about the City's plastic bag ordinance at boston.gov/plastic-bags or by calling 311, our constituent hotline. For more information on our Climate Action Plan, please visit boston.gov/environment.

Martin J. Walsh is the Mayor of Boston.

The Independent Newspaper Group reserves the right to edit letters for space and clarity. We regret that we cannot publish unsigned letters. Please include your street and telephone number with your submission. The Independent Newspaper Group publishes columns, viewpoints and letters to the editor as a forum for readers to express their opinions and to encourage debate. Please note that the opinions expressed are not necessarily those of The Independent Newspaper Group. Text or attachments emailed to editor@reverejournal.com are preferred.

THE BEACON HILL TIMES

PRESIDENT/EDITOR: STEPHEN QUIGLEY

MARKETING DIRECTOR: DEBRA DiGREGORIO

(DEB@REVEREJOURNAL.COM)

ART DIRECTOR: SCOTT YATES

FOUNDING PUBLISHER: KAREN CORD TAYLOR

© 2007 INDEPENDENT NEWSPAPER GROUP

PHONE: 617-523-9490 • FAX: 781-485-1403

EMAIL: EDITOR@BEACONHILLTIMES.COM WEB SITE: www.beaconhilltimes.com

Real Estate Transfers

BUYER 1 BACK BAY

Duffly, Thomas
Pamela A Steel RET
Dooley, Allyson
Henry MA Real Est LLC
Clarendon Street 2-210 RT
AP Newbury St Portfol 1
Kish, Kevin P
Manzi, Julianna
Aronowitz, Raina
Verdine, Gregory L
AP Newbury St Portfol 1
AP Newbury St Portfol 1
AP Newbury St Portfol 1
AP Newbury St Portfol 1
AP Newbury St Portfol 1
AP Newbury St Portfol 1
AP Newbury St Portfol 1
AP Newbury St Portfol 1
AP Newbury St Portfol 1
AP Newbury St Portfol 1
AP Newbury St Portfol 1
Tinga, Wiebe
AP Newbury St Portfol 1
Sugimoto, Yugi
Roy, John S
Manzi, Julianna
AP Newbury St Portfol 1
AP Newbury St Portfol 1
AP Newbury St Portfol 1
AP Newbury St Portfol 1
AP Newbury St Portfol 1
AP Newbury St Portfol 1
AP Newbury St Portfol 1
AP Newbury St Portfol 1
AP Newbury St Portfol 1

SELLER 1

Trilling, Alwx R
Oconnell, Mildred
Souss-Quinones, Aida
Zhang, Yuxiao
Nowak, Michael S
234-236 Clarendon St LP
Juliano, Diana A
Jill K Conway T
Bates, James E
Erica Ricci 2010 RET
111-115 Newbury St LP
119 Newbury St LP
127-129 Newbury St LP
154-156 Newbury St LP
160 Newbury St LP
172 Newbury St LP
177 Newbury St LP
179 Newbury St LP
220 Newbury St LP
234-236 Newbury St LP
71 Newbury St LP
81 Newbury St LP
85-91 Newbury St LP
Makadon, Harvey J
Jamerstown 899 Boylston
295 Commonwealth Ave LLC
Twowillco LLC
Jill K Conway T
286-288 Newbury St LP
299-301 Newbury St LP
299-301 Newbury St LP
328 Newbury St LP
329 Newbury St LP
71 Newbury St LP
81 Newbury St LP
85-91 Newbury St LP

ADDRESS

180 Beacon St #10A
259 Beacon St #20
265 Beacon St #B
329 Beacon St #2
2 Clarendon St #205
234 Clarendon St
160 Commonwealth Ave #415
65 Commonwealth Ave #8B
11 Dartmouth St #3
11 Exeter St #3
111-115 Newbury St
119 Newbury St
127-129A Newbury St
154-156 Newbury St
160 Newbury St
172 Newbury St
177 Newbury St
179 Newbury St
220 Newbury St
236 Newbury St
71 Newbury St
81-81A Newbury St
85 Newbury St
110 Stuart St #21B
899 Boylston St
293-295 Commonwealth Ave #6C
463 Commonwealth Ave #1
65 Commonwealth Ave #8B
288 Newbury St
299 Newbury St
301 Newbury St
328 Newbury St
329 Newbury St
71 Newbury St
81-81A Newbury St
85 Newbury St

PRICE

\$1,695,000
\$615,000
\$349,000
\$685,000
\$825,000
\$16,720,150
\$599,000
\$3,150,000
\$1,250,000
\$3,825,000
\$28,243,503
\$11,690,321
\$19,693,446
\$20,178,461
\$12,157,974
\$11,402,307
\$7,649,265
\$6,579,940
\$6,989,381
\$14,257,925
\$15,155,013
\$11,125,304
\$20,043,154
\$2,360,000
\$19,360,909
\$1,025,000
\$929,000
\$3,150,000
\$13,380,639
\$11,787,724
\$11,787,724
\$5,293,312
\$10,284,550
\$15,155,013
\$11,125,304
\$20,043,154

BEACON HILL

English, Julianne L
Depoalo, Ronald E
Stamoulis, Christina
Fragomeni, Matthew
Lavoie 2014 FT
Fenway Condo LLC
Bosman, Anne
Wilson, Ryan M
Grimes, Kevin E
Swan, William E
Fehrmann, Edward
Beata Swierczyndski T

Noble, Vicki E
Brown, Stuart R
Nikolaeva-Napier, Elena
Mitchell, Michael J
Scanlon, Gary T
Cenr Real Estate LLC
Nally, James F
Mcgrath, Thomas L
ABLE Baker LLC
Hierville Invest Ltd
Clair, David S
Grove, Ashley

65 Anderson St #GA
34-1/2 Beacon St #9
1 Bellingham Pl
234 Causeway St #815
234 Causeway St #822
56 Charlesgate E #145
5 Goodwin Pl #1
18 Hancock St #2
9 Hawthorne Pl #4D
107 Myrtle St
145 Pinckney St #210
73 Revere St #1

\$790,000
\$2,800,000
\$2,100,000
\$875,000
\$775,000
\$700,000
\$698,000
\$845,000
\$739,000
\$2,250,000
\$675,000
\$700,000

ATTENTION TO DETAIL

BY PENNY CHERUBINO

THIS WEEK'S ANSWER



The set of windows and columns in the last clue is on 178 Tremont St. across from the Boston Common. Construction on this building, designed by architect Charles Howard Walker, began in 1916. In 2012 it was renamed the Robert M. Coard Building to honor the longtime leader of Action for Community Development located at this address.

For next week, where and when might you see bells like these shown in a 1947 photo.

Do you have a favorite building or detail you would like featured? Send an email to Penny@BostonZest.com with your suggestion.

THIS WEEK'S CLUE



Eve Dougherty | 617.838.5884 | eve@compass.com

Navigating you home.

COMPASS

TORIT *(from pg. 1)*

on what they learned

"Chef Kelli is an excellent, thoughtful chef," said Chan. "Everyone loves her cooking, which appeals to children's developing taste buds and satisfies

adult palates, too. And parents are thrilled, too, because snack and lunch are included in tuition. It's great to see students enjoying lunch every day, and serving one another in a spirit of community

and helpfulness."

To see the students' video and learn more about the Torit School-Local farms partnership, visit Torit Montessori at toritschool.org/torit-table.

KING'S CHAPEL

CHRISTMAS FOR ALL AGES



The first church in Boston to celebrate Christmas continues its tradition, welcoming all visitors, neighbors and friends, for this special season.

CHRISTMAS SERVICES

Christmas Eve Family Service 5PM
We welcome all to a special nativity service.
Any child can participate without rehearsal.

Christmas Eve Lessons and Carols 10:30PM
Traditional service with full choir and candlelight

Christmas Day Holy Communion 10AM



King's Chapel | 58 Tremont Street
www.kings-chapel.org

TORIT TABLE MARKET



Naya acting as journalist for the video she and her peers produced about Torit's farm-to-school program



Jett discussing research into Stillman's Quality Meats for student-made video.



Valicenti Pasta Farm provides gluten free pasta and organic sauces for Torit Montessori.

Kolesar promoted to Associate at RODE Architects

RODE Architects, a collaborative design and architecture firm, is proud to announce that it has promoted Beacon Hill resident Shelley Kolesar to Associate. Kolesar was recognized for her dedication to the firm, superior client service and design ability, as well as mentorship and care for the profession. The promotions cover positions across the full range of the firm's capabilities, from operations to interior design.

"Our team is a truly unique group of individuals, and we inspire each other to achieve success and find the most amaz-

ing solutions for our clients. This group in particular represents our best skills, attitude, and sense of service," said Kevin Deabler, Principal. "It's important to recognize our leaders as the breadth of our work is increasing. We see these promotions, our very first at RODE, as a critical step in forming the future of firm."

Kolesar is responsible for the firm's human resources, financials, and overall operations. Kolesar has been with the organization since 2013 and brings close to two decades of professional experience, including industry-specif-

ic expertise to help navigate the business forward. At RODE, she has presided over an exciting period of firm-wide growth and cultural transformation. Originally from Ballston Spa, N.Y., Kolesar now resides in Boston, and is a graduate of the University of New Hampshire.

RODE's projects have received dozens of industry accolades and awards over the years and RODE was awarded among Boston's 50 on Fire in 2016. For current employment opportunities, please visit www.rodearchitects.com.

'TIS THE SEASON



Reader John Corey submitted this photo of the Christmas tree outside of 59 Chestnut St.

BEACON HILL BEAT

From Boston Police Area A-1

COMMUNITY SERVICE OFFICE: 617-343-4627
DRUG UNIT: 617-343-4879 • EMERGENCIES: 911

Vandalism
12/11/18 - At around 8:32 p.m., officers responded to a report of vandalism in progress at Warrenton Street and Charles

Street South. The victim was located and reported damage to her 2018 Subaru front and rear windows. The male suspect fled on foot towards Stuart Street.

Want Neighborhood News delivered right to your hands?



Subscribe to The Beacon Hill Times' Newsletter and never miss a thing!

Visit thebeaconhilltimes.com or scan the QR Code



The Skating Club of Boston®
SKATING ACADEMY

WINTER FUN
for the whole family!
at The Boston Common Frog Pond



Ice Skating Lessons Age 4-Adult
Group classes for beginner skaters!
Sat & Sun 8:30-10am • Mon 4:10-5:00pm

SkatingAcademy.org
617-787-5283

MASSACHUSETTS GENERAL HOSPITAL CANCER CENTER RESEARCH FUNDRAISER

On Monday, Dec. 3, the Massachusetts General Hospital Cancer Center raised nearly \$5 million for cancer research and care at its new signature event, CenterStage, at the Museum of Fine Arts. The funds raised will advance innovative new treatments that have the potential to transform cancer care.

Co-chaired by Jack Connors, Jr., Philip Schiller and Sam Slater, CenterStage celebrated progress in the fight against cancer and

honored the incredible team at the MGH Cancer Center, which is among the leading cancer care providers in the country.

Produced by Rafanelli Events, the event welcomed 325 guests with cocktails in the William I. Koch Gallery before moving into the Ruth and Carl J. Shapiro Family Courtyard for a seated dinner and speaking program with Daniel A. Haber, MD, PhD, Director, Massachusetts General Hospital Cancer Center, and David

P. Ryan, MD, Clinical Director, Massachusetts General Hospital Cancer Center/Chief, Division of Hematology/Oncology.

Dr. Haber passionately addressed guests, saying that through their support, they are

“helping to advance and accelerate the development and delivery of personalized cancer medicine, early-detection technologies and innovative supportive care that will impact patients here at Mass General and around the world.”

After dessert, special musical guest, Boyz II Men, took to the stage and brought the crowd to their feet with a high energy concert of their greatest hits.

For more information, visit www.massgeneral.org/cancer.



Sylvia Fernandez del Castillo, Meagan Coons, Michael and Mary McNally.



Dr. Peter Slavin, Dr. Daniel Haber, Cathy Minehan, Dr. Timothy Ferris, Mara Bloom and Dr. W. Gerald Austen.



**SUNDAY
AT SCAMPO**

SCAMPO

Beacon Hill residents
RECEIVE 25% OFF
ALL FOOD

Brunch, Lunch + Dinner

Now through January 27th
Just show your ID to the server

215 Charles Street, Boston MA The Liberty Hotel

MASSACHUSETTS GENERAL HOSPITAL CANCER CENTER RESEARCH FUNDRAISER



Marianne Leone, Chris Cooper, Carol Ryan and Dr. David Ryan.



Chad Carlberg and Kristina Harter.



Robert Small, Dr. Christine Olsen, Mark Henschke, Mimi Efstathiou and Dr. Jason Efstathiou.



Dr. Daniel Haber, Ellen Cohen and CenterStage Co-Chair Philip Schiller.



CenterStage Co-Chair Sam Slater and Jessica Slater.



CenterStage Co-Chair Philip Schiller, Eileen Connors and Co-Chair Jack Connors, Jr.



Terri and Tom Hamilton.



Dr. Daniel Haber.

Christmas Eve Candlelight Service

Monday, December 24 5:30 p.m.

Solstice Service...poetry & music

6:00 p.m.

Thursday, December 20

Special Guest

Aine Minogue

First Church in Boston,
Unitarian Universalist
66 Marlborough Street

The future of health
begins with you

The more researchers know about what makes each of us unique, the more tailored our health care can become.

Join a research effort with one million people nationwide to create a healthier future for all of us.

JoinAllOfUs.org

617-768-8300 or 617-414-3300

allofus@partners.org or allofus@bmc.org

Precision Medicine Initiative, PMI, All of Us, the All of Us logo, and "The Future of Health Begins with You" are service marks of the U.S. Department of Health and Human Services.

BRIGHAM HEALTH
BRIGHAM AND WOMEN'S HOSPITAL
MASSACHUSETTS
GENERAL HOSPITAL
Founding Members of Partners HealthCare

BOSTON MEDICAL

CALENDAR

THE DEADLINE FOR LISTING EVENTS IS THE TUESDAY BEFORE PUBLICATION. CALL 617-523-9490 OR FAX 617-523-8668 OR EMAIL EDITOR@BEACONHILLTIMES.COM

TUESDAY, DEC. 18

RECITAL, Joei Perry (soprano), Jennifer Webb (alto), Andy Troska (tenor), Dan Perry (bass) and Heinrich Christensen (organ) performing Handel's "The Half-Hour Messiah," King's Chapel, 58 Tremont St., 12:15 p.m., suggested donation; \$5, call 617-227-2155

WEDNESDAY, DEC. 19

FILM, "School of Rock" (2003, 109 minutes, Rated PG-13), West End Branch of the Boston Public Library, 151 Cambridge St., 3 p.m., call 617-523-3957 for more information

WEDNESDAY, DEC. 16

FILM, "The Commitments" (1991, 117 minutes, Rated R), West End Branch of the Boston Public Library, 151 Cambridge St., 3 p.m., call 617-523-3957 for more information

CITY PAWS

Kudos for dog communities!

By Penny & Ed Cherubino

Imagine yourself walking across the Boston Common just after dark. You spot a hulking figure in a sweatshirt with a hood hiding his face. He's lingering on the path ahead of you. Your city senses begin to tingle and you look around to see just how alone you are. Suddenly a beautiful chocolate Lab runs up to the figure and deposits a ball at his feet and you breathe a sigh of relief.

People with dogs bring activity and added security to our sidewalks and parks all year long, at all hours, and in all weather conditions. That hulking figure may have been making use of the Boston Common Off-Leash Dog Program. The Friends of the Public Garden who initiated the program in 2013 describe it as, "... the first approved off-leash area in a city park that does not fence off and designate a single-use restricted space in this historically open park of shared use."

Since the hours for use of the space are 6 a.m. to 11 p.m., those using the area do add to the number of neighbors around during the dark early morning and evening hours this time of year. In fact, that hulking figure may never have caught your attention because you may have felt secure walking by a

group of people chatting and playing with their dogs.

Introductions

We live in a large, dog friendly building. Often we are among the first to meet new neighbors with dogs. Our pets are the perfect reason to introduce ourselves and, once we know the new family, we can introduce them to dogless neighbors.

Beyond our building, we meet many neighbors and engage with them because of a connection we made via dogs. A neighbor walking the dog because his partner was sick once said to us, "No wonder Michael knows everyone and I don't. He walks Jewels."

Neighborhood Stewards

As a group, dog walkers spend a lot of time out and about and may notice things that other neighbors miss or ignore. This makes them excellent stewards of our neighborhoods.

In Boston, anyone with the 311 app on their phone can quickly report anything from trash left out at the wrong time or in the wrong place, to dangerous dangling tree branches.

We were among a group of dog families who attended an instructional meeting on how to spot and report any suspicion of Long



People with dogs bring activity and added security to our sidewalks and parks all year long, at all hours, and in all weather conditions.

Horned Asian Beetles in our area trees. Many dog walkers have taken the time to learn about the symptoms of Dutch Elm disease and can report sightings.

Since we have bags in hand, you will often see someone with a dog picking up not only after their own dog, but also after a scofflaw who failed to pick up. Some dog walkers carry an extra bag and pick up litter left by other

park users.

We have often referred to members of the dog community as an informal but key crime watch team. We know what is normal and not normal on our blocks. Criminals tend to ignore us so we can report the person walking down the street checking car doors to see if one is unlocked, or someone stealing packages off front stairways.

Kudos to all those out and about with dogs who add far more value to our neighborhoods than the few people who don't pick up or don't control their dogs, take away.

Do you have a question or topic for City Paws. Send an email to Penny@BostonZest.com with your request.



BREWSTER & BERKOWITZ REAL ESTATE

Charles Street Meeting House
121 Mt. Vernon Street Boston, MA 02108
617-367-0505 www.brewberk.com

Sally Brewster Betsey Barrett
Ron Berkowitz Toni Doggett

DS Simulia: Waltham, MA: Software Development Engineer, R&D: Design & implement functionalities in simulation software products w/in the DS 3DEXPERIENCE platform. MS in Comp. Scnc. or Software Engg + 2 yrs of exp. w/algorithm and software dvlpmnt using programming languages such as Java and J2EE. Need auth. to work indefinitely in the US. Send resumes to J. Forgetta, Dassault Systemes Simulia Corp., 1301 Atwood Ave, Ste 101W, Johnston, RI 02919.

**VISIT
WWW.
BEACON-
HILLTIMES.
COM**

THE ADVENT SCHOOL WINTER CONCERT

The Advent School performed a Winter Concert in celebration of nature's beauty on Dec. 14 at The Church of the Advent. Students, grades ECC-sixth, presented poems and songs about the gifts of each season, such as fall's golden leaves, and summer's warm haze.

Little ones proclaimed that success will follow when we care for the earth.



A sixth-grade boy reciting, "November."



Third-grade singing, "September."



Second-grade singing, "The Leaves Turn Gold in the Fall."



First-grade girls singing, "The Earth Song."

ADVERTISE IN
THE BEACON
HILL TIMES
PLEASE CALL
781-485-0588



PARK STREET CHURCH
Evangelical. Congregational. International.

CHRISTMAS EVE

MON DEC 24

3:00*, 5:00 & 7:00 PM

www.parkstreet.org/christmaseve

1 PARK STREET, BOSTON, MA 02108

COME,
long-expected
JESUS

** a service especially for families with young children*

P Government Center Garage

**LOOKING FOR PARKING ON
GAME DAY?**

FORGET ABOUT IT!

WE'VE GOT YOU COVERED!



**RESERVE EVENT
PARKING ONLINE!**

EASY ACCESS TO I-93

2 BLOCKS FROM TD GARDEN

GUARANTEED PARKING

617-227-0385

GOVERNMENTCENTERGARAGE.COM

NEIGHBORHOOD ROUNDUP

'Rock the Holidays Film Series' at West End Branch Library

The West End Branch of the Boston Public Library, located at 151 Cambridge St., presents "Rock the Holidays Film Series," including a screenings of "The Commitments" (1991, 117 minutes, Rated R) on Wednesday, Dec. 26, at 3 p.m. Call 617-523-3957 for more information.

Nichols House Museum seeking volunteer tour guides

The Nichols House Museum welcomes volunteers to join the museum as tour guides.

Guides provide vital support to the museum by leading high-quality tours to diverse audiences and communities.

Hours are flexible, and orientation and training throughout the month of March are required. Guides receive complimentary admission to the museum and all museum-programming events. There are also regular opportunities for complimentary, behind-the-scenes visits to other local museums and cultural organizations. Applicants should be interested in history, architecture, and decorative arts, and enjoy interacting with visitors of all ages. Tour guides typically commit to half or full-day shifts.

To apply, complete the application form available on the museum's homepage, www.nicholshousemuseum.org.

BSNJ Community Children's Chorus

The Boston Society of The New Jerusalem (BSNJ) Community

Children's Chorus is a comprehensive musical training program for children in the third through seventh grades.

Your child will be participating in a program that promotes: the love of music, expressive singing, teamwork-cooperative learning, building new friendships, self-assessment and the fun of being in an outstanding program.

The group meets at 140 Bowdoin St. on Saturday mornings. Tuition is free for any child with a Greater Boston-area address. All levels of singing ability are welcome. To register, contact Carlton Doctor at 617-523-4575 or visit www.churchonthehillboston.org (click on "music.")

BSNJ/The Church On The Hill sponsors this initiative, but we are not promoting any religious ideology.

MGH seeking volunteers

Massachusetts General Hospital Volunteer Department is seeking volunteers for its very busy office. Candidates must have excellent interpersonal skills in dealing with a broad international community of volunteers, as well as the ability to handle multiple tasks. Various shifts are available.

Contact Kim Northrup at 617-724-1826 for more information.

'Coloring for Adults' at the West End Branch Library

The West End Branch of the Boston Public Library, located at 151 Cambridge St., presents "Color Your World: Coloring for Adults" on Fridays from 2 to 4 p.m.

At this time, the library will supply coloring pages, colored pencils, markers and crayons, or bring your own supplies if you prefer. Feel free to drop in between these hours. Call 617-523-3957 for more information.

Spanish/English Language Exchange

The West End Branch of the Boston Public Library, located at 151 Cambridge St., presents the Spanish/English Language Exchange/Intercambio de Idiomas en Inglés y Español on Mondays from 3 to 5 p.m.

At this time, English speakers can practice Spanish and

Spanish speakers can practice English in this fun, informal conversation class.

Call 617-523-3957 for more information.

BSNJ Community Children's Chorus

The Boston Society of The New Jerusalem (BSNJ) Community Children's Chorus is a comprehensive musical training program for children in Grades 3 to 7.

Your child will be participating in a program that promotes: the love of music, expressive singing, teamwork-cooperative learning, building new friendships, self-assessment and the fun of being in a well organized program.

The rehearsals take place at 140 Bowdoin St. on Tuesday afternoons. Tuition is free for any child with a Boston address. All levels of singing ability are welcome. To sign up, please contact Mr. Doctor at 617-523-4575 or visit www.churchonthehillboston.org (click on "music").

The Church on the Hill sponsors this initiative but we are not promoting any religious ideology.

'Preschool Story Hour' at West End Branch Library

The West End Branch of the Boston Public Library, 151 Cambridge St., offers the "Preschool Story Hour" on Tuesdays from 10:30 to 11:30 a.m.

Children, ages 3 to 5, and their caregivers join the children's librarian for weekly stories, songs, rhymes and movement. This is a high-energy story time, and families, daycare and school groups are all welcome to drop in.

ESL conversation group resumes meeting at West End Branch Library

The West End Branch of the Boston Public Library, located at 151 Cambridge St., welcomes the English as a Second Language (ESL) conversation group every Tuesday from 1 to 2:30 p.m. Come and practice your English language skills with other newcomers and a facilitator.

West End Playgroup meets Tuesday mornings

The West End Community Center, located at 1 Congress St., welcomes the West End Playgroup on Tuesdays from 9:30 to 10:30 a.m. through the fall and winter.

This is a free drop-in time to let kids play and adults chat with one another. Small toy donations are welcome.

'Toddler Time' at the West End Branch Library

The West End Branch of the Boston Public Library, 151 Cambridge St., presents "Toddler Time" on Wednesdays from 10:30 to 11:30 a.m.

At this time, children ages 18 months to 3 years and their caregivers join the children's librarian for developmentally appropriate stories, rhymes, movement, and songs. Drop-in for families, and groups, should contact the library ahead of time at 617-523-3957.

Get homework help at the West End Branch Library

The West End Branch of the Boston Public Library, located at 151 Cambridge St., offers homework help every Thursday from 4 to 6 p.m.

Get help from a Boston Public Schools teacher. No appointment necessary; simply drop in with your homework. Call 617-523-3957 for more information.

Compassionate Friends group reaches out to bereaved parents, families

The Boston Chapter of The Compassionate Friends (TCF) meets at Trinity Church on the first Tuesday of each month from 6 to 7:30 p.m.

TCF is a national self-help, mutual-assistance organization offering friendship, understanding and hope to bereaved parents and their families. Call 617-539-6424 or e-mail tcfboston@gmail.com for more information.

West End Food Pantry seeking donations

The West End Food Pantry needs help to continue serving its more than 120 clients per month. They welcome dona-

HELP WANTED

We need Superstar associates and shift supervisors

at OHM Concession Group! Come work in an atmosphere you'll love and feel good about the product you serve. We take pride in having a fun work environment with flexible hours to fit most scheduling needs. Shift start as early as 3:00am and we close 30 minutes after last flight. Must be available 7 days a week. We are hiring for the following locations: Dunkin Donuts, Currito Burrito and La Baguette Marche. We are looking for energetic individuals to cashier, serve, prepare food, ensure a clean workplace and provide outstanding customer service. We have openings for day, evening and weekend shifts. Advancement opportunities available!

Required: Background check, legally authorized to work in the U.S., 18 years or older

Contact Jigesh Patel, Dunkin Donuts manager, at 434-774-6907 or email your resume to jigesh.patel@ohmgroup.com

SERVICE DIRECTORY

JOHN J. RECCA PAINTING
Interior/Exterior
Commercial/Residential
Fully Insured
Quality Work
Reasonable Rates
Free Estimates
reccapainting@hotmail.com
781-241-2454

MICHAEL P. MCCARTHY
PAINTING, INC.



-HISTORIC RESTORATION
-PLASTER & DRYWALL REPAIR
-WALLPAPER REMOVAL

617-930-6650

WWW.MPMPAINTER.COM

BEACON HILL PLUMBING & HEATING
Meeting all your mechanical needs
24/7 emergency service
M M9304
617-723-3296

Old Window & Door Restoration
Sash • cord
copperchain • etc
Lock repair
call Rez at
6179473710
or email at
Rezayazdi252@gmail.com

NEIGHBORHOOD ROUNDUP

tions to replenish the supply of food that they give out to hungry residents in the neighborhood.

The pantry is located in the West End Branch of the Boston Public Library and is staffed by volunteers from ABCD's North End/West End Neighborhood Service Center. Non-perishable (canned and boxed) items are being sought, including rice, pasta, canned tuna, canned chicken, chili, beans, vegetables, cereal, soups, cup of noodles, etc.

Donations can be left at the library, 151 Cambridge St., on Monday through Wednesday from 10 a.m. to 6 p.m., Thursday from noon to 8 p.m. and Friday from 9 a.m. to 5 p.m.

Volunteers needed for hot meal program

The North End/West End Neighborhood Service Center (NE/WE NSC), located at 1 Michelangelo St., serves a hot, fresh, home-cooked lunch to seniors in the neighborhood Mondays and Fridays, and is looking for two volunteers to help with shopping, food preparation, cooking, serving and clean-up. The non-profit providing services and programs to low-income residents of the North End, West End and Beacon Hill is looking for volunteers who can assist with the whole meal from 9 a.m. to 2 p.m. on a Monday and/or

Friday, but can make arrangements to fit your schedule.

Contact Maria Stella Gulla, director, at 617-523-8125, ext. 201, via e-mail at mariastella.gulla@bostonabcd.org for more information.

Introduction to laptops, eReaders and iPads at the West End Branch Library

The West End Branch of the Boston Public Library, 151 Cambridge St., offers an introduction to laptops, eReaders and iPads by appointment only. Get the most out of your eReader or Laptop. Receive tips and guidance during these one-on-one sessions. Call Branch Librarian, Helen Bender at 617-523-3957 or e-mail hbender@bpl.org to set up an appointment.

Yoga for seniors at the West End Branch Library

The West End Branch of the Boston Public Library, 151 Cambridge St., presents yoga for seniors every Tuesday from 2:45 to 3:30 p.m. Classes are led by Tatiana Nekrasova, a certified yoga instructor.

Volunteer at Spaulding Rehab

Stay active, meet new people and be connected with your community by volunteering at Spaulding Rehabilitation

Hospital. Staff members will match your skills and interests to a volunteer opportunity. The hospital is currently recruiting volunteers, ages 18 and up, for two- to three-hour-a-week shifts for a minimum of six to 12 months commitment. Visit www.spauldingnetwork.org for more information.

After-work tai chi group at the West End Branch Library

The West End Branch of the Boston Public Library, 151 Cambridge St., welcomes after-work tai chi group every Thursday from 5 to 6 p.m. Come and try this low impact energy exercise with yang-style tai chi instructor Arthur Soo-Hoo.

Volunteers needed for American Cancer Society cosmetic sessions

The American Cancer Society is currently seeking volunteers for the "Look Good...Feel Better" sessions held at Tufts Medical Center, 800 Washington St. "Look Good . . . Feel Better" is a free program that teaches cancer patients hands-on cosmetic techniques to help them cope with appearance-related side effects from chemotherapy and/or radiation treatments. Cosmetologists certified and trained by the American Cancer

Society conduct the sessions, which are non-medical and do not promote any product line. Volunteers are needed to assist the cosmetologist conducting the session and are responsible for set-up, cleanup, and any other needs of the program. Programs are held from noon to 2 p.m., one Monday every other month. For more information or to volunteer, contact Nanyamka Hales at 781-314-2611 or via e-mail at Nanyamka.Hales@cancer.org, or visit cancer.org.

Be a friend to elderly in need

FriendshipWorks seeks caring people to offer help and support to isolated elders in the Boston area. Volunteers are needed to provide companionship and assist elders with tasks such as reading, organizing, or going for a walk - lend an hour each week and gain a friend and a new perspective. Volunteers also needed to escort elders to and from medical appointments. No car is needed and hours are flexible. For more information or to apply online, visit www.fw4elders.org or call 617-482-1510.

Local residents needed to drive cancer patients to and from treatment

The American Cancer Society is in great need of Road to Recovery volunteers to drive local cancer patients to and from their chemotherapy and/

or radiation treatments. An integral part of treating cancer successfully is making sure cancer patients receive their treatments, but many find making transportation arrangements is a challenge. The American Cancer Society provided more than 19,000 rides to cancer patients in New England last year, but needs new volunteer drivers to keep up with the demand for transportation.

Make a difference in the fight against cancer by becoming a volunteer driver for the American Cancer Society's Road to Recovery. Drivers use their own vehicle to drive patients to and from their treatments. The schedule for volunteers is flexible, and treatment appointments take place weekdays, primarily during business hours. If you or someone you know is interested in becoming a volunteer driver for Road to Recovery, contact your American Cancer Society at 800-227-2345 or visit www.cancer.org.

Join the Downtown Boston Rotary Club

The Downtown Boston Rotary Club, the first new Rotary Club in Boston in 100 years, holds meetings at the UMass Club in the Financial District on the first and third Tuesdays of each month from 6 to 7:15 p.m.

For more information, visit www.dbrotary.org or call 617-535-1950.

LOCAL STUDENTS RECEIVE ACADEMIC ACHIEVEMENTS

Boston College High School First Quarter Honors Roll

The following local students have been named to the Boston College High School First Quarter Honors Roll:

For High Honors a Sophomore, Junior or Senior must have at least a 3.80 quality point average and all grades "C+" or higher. Freshmen need a 3.6 quality point average and all grades "C+" or higher.

For Honors a Sophomore, Junior or Senior must have at least a 3.20 quality point average and all grades "C-" or higher. Freshmen need a 3.165 quality point average

Back Bay

Joseph Brink 2020 High Honors

Colin Fahey 2022

Honors

Luke Myers 2022 Honors

Charles Prucher 2022 Honors

North End

Pietro Brocca 2021 High Honors

Theodore Pasto 2021 Honors

Liam Walsh 2021 Honors

West End

Mika Bauk 2021 Honors

Willem Lenig 2021 Honors

Emiliano Valencia-Donohue 2021 High Honors

Boston College High School is a Jesuit, Catholic, college-preparatory school for young men founded in 1863. The school enrolls approximately 1600 students from more than 100 communities in eastern Massachusetts.

Local residents embark on undergraduate careers at Tufts University

Local students joined more than 1,500 undergraduate students from around the world as they begin their academic careers at Tufts University, located in Medford/Somerville, Massachusetts.

The university's Class of 2022 includes:

Anya Tisdale, Beacon Hill

Eoghan Downey, Beacon Hill

In all, only 14.6 percent of a record breaking 21,501 applicants were admitted to the university, the second-lowest acceptance rate in university history.

The university's Class of 2022 is the most diverse class ever, the beneficiary of the largest commit-

ment of financial aid in university history, and a trailblazer in gender parity among engineering students - all while maintaining Tufts' status as one of the most selective universities in the country.

Thirty-seven percent of first-year U.S. undergraduates identify as students of color, a Tufts record. The 1,544-member undergraduate class received \$25.8 million in need-based grants, a new mark for financial aid commitment by the university. And the incoming engineering class nearly reached gender parity, with 49 percent of students identifying as women.

"We often talk about creating an intentional community," said Karen Richardson, dean of admissions and enrollment management at the Class of 2022's matriculation ceremony. "With the Class of 2022, we have put together a

group of learners who will contribute not only academically but also to our community's social fabric."

Tufts University, located on campuses in Boston, Medford/Somerville and Grafton, Massachusetts, and in Talloires, France, is recognized among the premier research universities in the United States. Tufts enjoys a global reputation for academic excellence and for the preparation of students as leaders in a wide range of professions. A growing number of innovative teaching and research initiatives span all Tufts campuses, and collaboration among the faculty and students in the undergraduate, graduate and professional programs across the university's schools is widely encouraged.

Sara Campbell clothing store showcase Eleanor Score's artwork

By Dan Murphy

Eleanor Score recently stopped by the Sara Campbell to buy a pair of cashmere gloves, but left with an invitation to showcase her artwork last Thursday, Dec. 13, at the women's clothing store at 84 Chestnut St.

Score, longtime Beacon Hill resident and wife of antiques deal-

er Stephen Score, cites the French Impressionists and Matisse and Raul Dufy as her biggest influences for the large oil paintings she created in Provincetown, as well as smaller oil paintings depicting the Public Garden and "treasured objects from [her] new garret on Lime Street." The exhibit also featured some of Score's collage paintings on old worm board fea-

turing images of an angel and a sailboat.

"It was a glorious extended summer by the water so you'll see seagulls, sunrises over the harbor, fishing boats, a mermaid even," Score wrote, "It is such an important thing for an artist to share her vision. I really am not satisfied just to see God's beauty. I have to paint it, try to capture it somehow as best I can."

Kate Fini, the store's manager, said hosting an art exhibit was a first for Sara Campbell.

"We're so excited because this is our first event with a local artist," Fini said. "It's kind of our first cultural event within the Beacon Hill community."

Meanwhile, longtime Beacon Hill resident Richard Perkins played piano for the occasion.



Eleanor Score and pianist Richard Perkins at Score's art exhibit last Thursday at Sara Campbell.

CAPTURE THOSE STORIES NOW!

with **Personal Story Films**

We will create a beautiful, unique film of your older loved ones

A priceless gift for the family and future generations. We take care of everything! Flexible lengths to meet your needs. Don't wait!

Professional, experienced - Available for young families, too.

Memories are Treasures

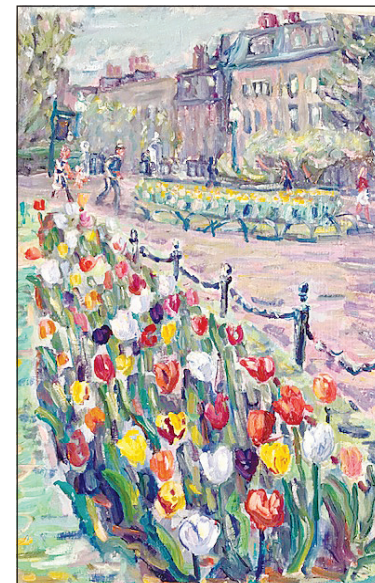
CALL 617-942-1875
www.personalstoryfilms.com
personalstoryfilms@gmail.com

Located in Back Bay

ANKFIT

You in?

617.797.3076 ankfit.com ryan@ankfit.com



Eleanor Score's "Tulips in the Public Garden."

SoundShapes Spa
A SKIN & BODY REJUVENATION CENTER

MED SPA - ANTI-AGING FROM THE INSIDE OUT
 CALL US TODAY AT (617) 367-1900 FOR A COMPLIMENTARY CONSULTATION

Feeling sluggish after Holiday Party?
 IV Hydration therapy a Perfect Solution!
 Book your Appt. today!

Full skincare
 Xeomin (Purified Botox)
 Acne Treatments

Biodentical Hormonal replacements (men + women)

Monday & Thursdays Botox + Filler Appointments available - Day and Evening openings

230 Commercial St., Boston MA 02109
www.sound-shapes.com

DAVE POUTRÉ FINE FRAMING

Tuesday-Saturday 10am-6pm
 82 Charles Street
 Boston, MA 02114
 617.723.7263

dave@davepoutrefineframing.com
www.davepoutrefineframing.com